



# MANCHESTER COMMUNITY THEATRE PLAYERS

*MCTP Second Stage Professional Presents*

## MIRIAM First Woman Prophet

### A New Musical

MUSIC & LYRICS BY **DEBBIE FRIEDMAN**



WRITTEN BY **ALAN D. KAPLAN** AND **TOM ANASTASI**

DIRECTED BY **ALAN D. KAPLAN** | MUSIC DIRECTOR **JUDY HAYWARD**

ARRANGED BY **OR OREN** | CHOREOGRAPHER **MARGARET WINDLER**

**May 21st and 22nd, 2021 at 7:30 PM**

**May 23rd, 2021 at 2:00 PM**

**MCTP Theatre at the North End Montessori School**

**698 Beech Street, Manchester, NH**



**BEDFORD AMBULATORY  
SURGICAL CENTER**

**11 Washington Place**

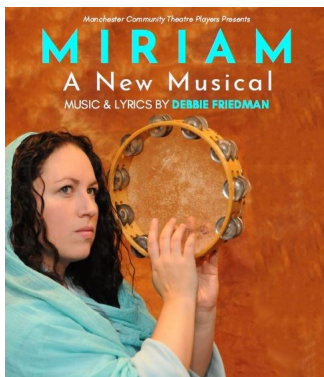
**Bedford, NH 03110**

**603-622-3670 Phone**

**603-626-9750 Fax**



# MANCHESTER COMMUNITY THEATRE PLAYERS



***Music and Lyrics by Debbie Friedman***

***Book by Tom Anastasi and Alan D. Kaplan***

***Musical arrangements by Or Oren***

***Directed by Alan D. Kaplan***

***Music Direction by Judy Hayward***

***Choreography by Margaret Windler***

***(with original choreography by Bruce Williams)***

***Produced by Alan D. Kaplan and Steven B. Short***

**Lighting**

Craig Brennan

Alan D. Kaplan

**Sound Design**

Steve Short

**Set Design**

Alan D. Kaplan

**Technical Director**

Craig Brennan

**Costumes**

Mary's Closet

Mary Selvosky

Mary Jo Smith

**Stage Manager**

Trystan Stoffel

*MIRIAM is presented by arrangement with*

*The Farf, Inc.*

Manchester Community Theatre Players and  
Second Stage Professional Company  
wish to thank

RIVERSTONE  
A FAIRFAX COMPANY

RISKSMART RUN-OFF<sup>SM</sup>  
SOLUTIONS

For their Very Generous Support of our Endeavors

We are Very Grateful  
for their long-standing contributions

## **Some House Notes....**

Manchester Community Theatre Players would like to remind you...

- Please turn **off** all cell phones due to interference with wireless mics.
- Please do not use flash photography as it distracts the performers.
- Please do not video tape the performance as it is a copyright violation.
- There will be a fifteen minute intermission and cold drinks and snacks will be available for purchase at the back of the theatre.

Please check your Playbill for future shows. All shows and auditions are posted on our website [www.mctp.info](http://www.mctp.info) Visit us there!

Thank you very much and we hope to see you at all our performances!

### **Manchester Community Theatre Players**

#### **Board of Directors**

Christine Windler, President  
Tom Anastasi, PhD, Vice President  
Lisa Volonte, Treasurer  
Lori Coyle, Secretary  
Steven B. Short, Company Manager  
Alan D. Kaplan, MD, Artistic Director  
Craig Brennan  
Debra Garlin, DO  
Dave Lemay  
Dan Merriman  
Justin Sheils  
Trystan Stoffel  
Margaret Windler

#### **Advisory**

Cathy McKay, Mark Murai,  
Dave Penchansky, Jackie O'Dowd

## Director's Notes

*"Miriam" a New Musical* originated during the 2002 URJ-NFTY trip to Europe and Israel as a collaboration between Debbie Friedman (the song leader) and Dr. Alan Kaplan (medical director and playwright). Noting the absence of musicals about biblical women we chose "Miriam" as the central character based on music Debbie had written about her. The story is the journey of a people (The Israelites) from their hardships in Egypt, the exodus across the Red Sea, wanderings in the desert, receiving the 10 Commandments (actually 613) and finally arriving in the Holy land. The role of "Miriam" the first woman prophet cannot be minimized for her gift to find water allowed the survival through the 40 years in the desert.

Playwright Tom Anastasi joined the team in 2002. Work on the script continued during my annual meeting with Debbie at Hava Na'Shira until her death in 2011. On recommendation from Debbie's sister Cheryl we contacted Or Oren (composer and arranger - "The Debbie Friedman Suite") who agreed to voice the music for four part harmony and orchestra. As the person closest to Debbie, Cheryl has been both an inspiration and a guide on our journey and made the use of the music and photos available. My gratitude to Rabbi Beth Davidson who kept us on a closely accurate biblical track, Cantor Jeff Klepper who assisted with the musical choices and Rabbi Robin Nafshi who contributed her poetic commentary on the Midrash of Nachshon ben Aminadav (the first to walk into the Red sea). Thanks also to the production team who brought their special skills on this journey. Judy Hayward, Music Director; Margaret Windler, Choreographer; Trystan Stoffel, Stage Manager; Craig Brennan, Lighting; Steve Short, Sound; Jim Cotton, Projection Imagery.

This production, delayed for 14 months due to the pandemic, would not have been possible without the efforts and dedication of the cast. To learn their lines and music they had to master Hebrew pronunciation in addition to the ever-evolving script (with a new work there are changes with every rehearsal), choreography and vocal parts. Leading the cast we are fortunate to have Arielle Kaplan, a talented actress, cantorial soloist, and song leader who sang with Debbie. She is a Hebrew speaker and coached the cast through their language lessons. Special thanks to my wife Emilie who made many suggestions to both the script and the staging. She was on the trip in 2002 and has been a constant support through the thousands of hours that have gone into this production. Finally, to Debbie, my friend and partner in this venture - with the help of all these people this is the fulfillment of my promise to you - The musical story of a biblical woman's significant role in the journey of her people - "Miriam".

Alan D. Kaplan



**DEBBIE FRIEDMAN** (Music/Lyrics) was born on February 23, 1951 in Utica, New York. When Debbie was 6 years old, her family moved to St. Paul, Minnesota. In her creations, numbering more than 230, she found a home for Jewish texts and liturgy, and lyrics she created based on themes of social issues affecting the welfare of citizens around the world. Her music is raw. It is a narrative of her personal journey. Every nuance of her music and lyrics give voice to her love for

Judaism, her love for others, her joy and pain – they give voice to the person that Debbie was and wanted to be. She was the recipient of numerous awards for her contributions to Judaism and society at large. Debbie's public appearances took her to locations around the globe -- from coast to coast in North America, Israel, Europe, and South America.

In 1997, Debbie performed a sold-out solo concert at Carnegie Hall. The concert celebrated the 25th anniversary of her distinguished musical career. The following year, Debbie appeared in her second sold-out solo concert at Carnegie Hall.

During those concerts, audience members danced in the aisles – parents danced with young children on their shoulders – a sight not commonly seen at Carnegie Hall. Debbie was a contributor or a subject of countless publications and articles. In 2004, a documentary of Debbie's life, *A Journey of Spirit*, aired on PBS. She was invited to serve on the faculty for numerous programs at colleges and universities, organizational conferences, synagogues, camps, retreat centers, and more. In 2007, Debbie was appointed to the faculty of the Hebrew Union College-Jewish Institute of Religion's (HUC-JIR) School of Sacred Music in New York and to the HUC-JIR faculty in Los Angeles. This appointment fulfilled Debbie's lifelong dream to teach in a formal setting – allowing her another avenue to help shape the future of the Jewish people. Debbie taught both rabbinic and cantorial students. In December of 2011, the HUC-JIR School of Sacred Music was renamed the HUC-JIR Debbie Friedman School of Sacred Music.

In Debbie's live performances, audiences were drawn to her instinctive ability to bring the largest audience into a circle of intimacy. She could offer shoot-from-the-hip banter – replete with seamlessly-woven non sequiturs – then move right into impactful messages that could touch the deepest part of the soul.

“My work is my joy. It is what drives me and keeps me alive.”

Debbie Friedman (1997)

# CAST

Miriam.....	Arielle Kaplan
Moses.....	Don Laduke
Aaron.....	Stuart Harmon
G-d.....	Glen Grimard
Yocheved.....	Kerry Schneider
Yana.....	Nen Horan
Pilas.....	Dan Merriman
Pharoah.....	Bruce Smith
Hagar.....	Dave Lemay
Naomi.....	Shoshana Reif
Abena/Tzipporah.....	Lori Coyle
Ariella.....	Lisa Volonte
Benjamin.....	Justin Sheils
Dinah.....	Alison Sjolund
Obed.....	Glenn Wakeley
Zophar.....	Connor Forbes
Soldier.....	Tom Anastasi

**MCTP would like to gratefully acknowledge the contributions of MARY SELVOSKI for her many years of costuming it's shows, as well as all of NH's many theatre organizations.**

**THANK YOU**



544 Daniel Webster Highway • Merrimack, NH  
603.424.5514 [www.reedsferrylumber.com](http://www.reedsferrylumber.com)



# MUSICAL NUMBERS

## ACT ONE

This is the Day .....Miriam, Yocheved, and Company  
Mourning into Dancing ..... Miriam, Pilas  
L'Chi Lach.....Miriam, Aaron, Moses  
Kaddish..... Company  
Miracles Aren't Just Magic ..... G-d, Moses  
Sing Unto G-d.....Miriam, Hannah, Yana, and the Women  
Mi Shebeirach ..... Miriam and Company  
The Plague Song..... Miriam and Company  
Mi Chamocha..... Miriam and Company  
Miriam's Song ..... Aaron, Miriam, and Company

## ACT TWO

The Water in the Well ..... Yana, Zophar, Terah, Hannah, and Company  
The Journey Song.....Yanah, Miriam, Moses, and Company  
Lullaby .....Miriam, Yana, and Shanya  
And Thou Shalt Love ..... G-d  
Elohai N'Shama\* ..... Moses, G-d  
You Are The One ..... Miriam, Pilas  
Don't Hide Your Face ..... Miriam  
The 613 Commandments ..... Miriam, Aaron, and Company  
Eil Na R'Fa Na La..... Moses, Aaron, and Company  
First To Rejoice.....Yana, Miriam, and The Women  
Holy Place ..... Zophar, Terah, Hannah, Yana, and Company  
Light These Lights..... Miriam and Company  
Not By Might, Not By Power..... Yana and Company  
  
MEGAMIX.....Company  
Oseh Shalom, Im Ein Ani Mi Li, Devorah's Song, Im Tirzu,  
T'Filat Ha Derech, Miriam's Song (Reprise)

\*English lyrics by Alan D. Kaplan

---

---

## WHO'S WHO IN THE CAST AND CREW

**TOM ANASTASI** (Co-writer/Soldier) *Miriam* is Tom's seventh play to be produced by MCTP (*Deadline*, *Christmas Stories* {music by Peter Bridges}, *Role Play*, *Surviving Evil* {co-written with Alan D. Kaplan}, and *The Science Experiment* {co-written with Alan D. Kaplan}). Tom has also acted in many MCTP productions including *Annie* (Oliver Warbucks), *Fiddler on the Roof* (Motel 2006, Constable u/s 2012), *The Wizard of Oz* (Tin Man), *She Loves Me*, (Sipos), *Baby* (Alan), *I Love You, You're Perfect, Now Change* (2003), *Oliver* (Mr. Brownlow), *Christmas Stories* (Clark), *Joseph and the Amazing Technicolor Dreamcoat* (Naphtali), *Children of Eden* (Abel). Tom was also honored to play Stephen Lewy in *Surviving Evil* which has been seen by over 5,000 people in nine tours including New Hampshire, Massachusetts and New York City. *Surviving Evil* has recently been made into a narrative-documentary film featuring narration by Stephan Lewy and MCTP company manager Steve Short. Tom has also won two New Hampshire Theatre Awards for Best Original Play for *Christmas Stories* (MCTP), and *Lazarus* (StageCoach Productions) and has produced and written the screenplay for the feature film *Spin the Plate*, which has won several festival awards around the country for best feature film, best inspiration feature, and best romance feature including screenings in festivals in Times Square in Manhattan and Grauman's Chinese Theatre in Hollywood. Tom is a founding member of MCTP and has served as Vice-President since its inception. Tom is a member of the Dramatist's Guild of America.

**CRAIG BRENNAN** (Technical Director/Lighting Design) Craig is pleased to be returning to Manchester Community Theatre Players for *Miriam* having most recently lit *Blood on his Hands*. Prior Manchester Community Theater Players productions lit include favorites *Jesus Christ Superstar*, *Beauty and the Beast*, *Peter Pan*, *Yours*, *Anne* and *Cats*. Craig is a three-time winner of the NH Theater Award for Best Lighting Design for ActorSingers and the Peacock Players. Craig has been extensively involved in lighting for all the local theatre groups having most recently lit *Drowsy Chaperone*, *Rock of Ages*, *Young Frankenstein*, *Crazy for You*, *Music Man*, and *Les Miserables* for ActorSingers in Nashua. Other community credits include *Beauty and the Beast* for ACTORS, Inc. in Massachusetts and productions for Ghostlight Productions and Milford Area Players. Additionally, his lighting has been seen professionally at the former American Stage Festival and Yellow Taxi Productions in Nashua as well as the Lyric Stage Company and the Publick Theatre in Boston.

**LORI COYLE** (Abena) Lori is very excited to be working with this incredibly talented cast! She joined the MCTP family in 2012 and has had a wonderful time participating in a variety of productions including her most recent performances in *Noises Off*, *Our Town* and *Music Man*. Off-stage, Lori is employed as a School Psychologist for the Manchester School District. She would like to express her warmest thanks to her wonderful friends and family, particularly her husband, Ken, and daughter, Trystan, for their unending encouragement, support and love!

---

## WHO'S WHO IN THE CAST AND CREW

**CONNOR FORBES** (Zophar) is extremely thrilled to be back at MCTP for yet another show, after appearing in *Alice in Wonderland*, *Jesus Christ Superstar*, *Flashdance*, and *Legally Blonde*. Other favorite shows he's done are *High Fidelity* and *Miracle on 34th St.* with Majestic Theatre, and *The Hot L Baltimore* at NHTI. In his free time, Connor enjoys going to 24-hour diners at 3:00 in the morning, reading *Ivanhoe* in his car, and writing biographies about himself in the third person. Connor would like to thank the cast and crew of *Miriam* for all of their support, as well as his parental units for allowing him to be on stage in the first place.

**GLEN GRIMARD** (God) is happy to be onstage again in front of a Manchester, NH audience. His last appearance on a stage in Manchester was as "Death" in the musical "Judy's Scary Little Christmas." This is his first musical with MCTP but he has patronized a few previous productions such as "My Fair Lady" and "Amahl and the Night Visitor's." Glen lives in Lowell, MA with his dog Bella and besides involvement in amateur theater, he is a cantor in the River of Divine Mercy Catholic Collaborative and he walks. A lot. Thanks to Judy for the invitation to perform in this production.

**STUART HARMON** (Aaron) Stuart is overjoyed to be live onstage again. He has appeared in numerous shows throughout New England over the last 20 years. He last performed with MTCP as Harold Hill in *The Music Man*. He hopes you enjoy this premier performance of *Miriam*.

**JUDY HAYWARD** (Music Director) holds a BFA in Piano Performance from LA Tech University and an MA from the University of Oregon in Arts Administration. With approximately 300 shows to her credit, she has music directed for professional and community theaters from coast to coast. In New England, Judy has been the music director for StageCoach Productions (co-founder), Seacoast Rep, Winnepesaukee Playhouse, Concord Community Players, Savoyard Light Opera Company (MA), Weston Friendly Society (MA), Actorsingers, Majestic Theatre, and Peacock Players. She has also been a director and choreographer. Judy has been the recipient of the New Hampshire Theater Award for Best Music Director numerous times.

**NEN HORAN** (Yana) Nen, a 17-year-old from Sandown, is delighted to once again be back at Manchester Community Theater Players. Music theater has been Nen's passion since she was very young. Last year, she had the incredible opportunity to perform in an award-winning two-person musical at an off-Broadway theater. Some of her favorite roles have been Peter Pan, Annie, and Emily from *Our Town*. She also played "Leading Player" in *Pippin* last spring., and played Bianca in MCTP's covid production of *Blood On His Hands?*. Thank you, Alan, for always believing in me. Your support has pushed me to become who I am today. Thank you to Mom and Dad for always encouraging me to use my talents and pursue my passions

---

## WHO'S WHO IN THE CAST AND CREW

**ALAN D. KAPLAN** (Artistic Director/Set Design/Lighting Design) is the founder and artistic director of Manchester Community Theatre Players (MCTP) and Second Stage Professional Company (SSPC). He has been associated with the performing arts for 66 years as a performer, make-up artist, technical director, set and lighting designer, choreographer, and stage director. He has been nationally recognized by the American Association of Community Theatre as a director for his work in adult and youth theater. Once again thanks and love to my wife Emilie for her support and understanding of the long hours required to make the magic of live theater happen and the opportunity to work with our daughter Arielle on this production.

**ARIELLE KAPLAN** (Miriam) is a Boston area actor, singer, violence designer, historic interpreter, and cosplayer. It is a delight to return to MCTP after a long hiatus. MCTP/Second Stage work includes: *The Last Five Years* (Cathy), *Fiddler on the Roof* (Hodel), and *I Love You, You're Perfect, Now Change* (Woman One). Selected work: *Old Jews Telling Jokes* (Debbi), *Big River* with The Barnstormers, *Babes in Arms* with Berkshire Theatre Festival, the *Schoolhouse Rock Live!* New England Tour (Dori), *Mrs. Frost* (Elizabeth Frost), *Daemonologie* (Patience Hawke), and *Chicago* (Mama Morton).

Arielle grew up singing and playing Debbie Friedman's songs both at synagogue and as a songleader at Eisner Camp, and it is such an honor to give her music new life through this lovely work. Debbie's music shaped my life spiritually and a performer, and I hope you are all able to find the joy and peace running through her songs as well. Much love to Mim, Vats, Mister Z, Egguine, and all the puppins. I could not do this without all of you.

**DON LADUKE** (Moses) is delighted to be in his first MCTP production. He has enjoyed performing in Southern New Hampshire for over 20 years and you may have seen him in such roles as George Bailey in *It's a Wonderful Life*, Emile De Becque in *South Pacific*, or Oliver Warbucks in *Annie*. Don has performed with Music And Drama Company, Operafest! Of NH, Hope Light Opera, Peacock Players,

**DAVE LEMAY** (Hagar) **DAVID LEMAY** (Hagar) is very proud to be part of *Miriam*. He has done several MCTP productions, including *Hey Abbott*, *The Wizard of Oz*, and *I Love You, You're Perfect, Now Change*. David is also on the Board of Directors for MCTP. He is extremely grateful for all of the opportunities he has had with this theatre family, and wishes to thank Steve for writing his bio, he is the best! Shout out to all my family and friends for their support and love...you are my rock.

**DAN MERRIMAN** (Pilas) is pleased to be performing in this original production, many years in the making. Next he will be playing Rooster, in our co-production of *Annie Jr.* Dan also co-starred in the award winning feature film, *Spin The Plate*. He thanks family and friends for their support, and sends a shout out to all those working behind the scenes!

---

## WHO'S WHO IN THE CAST AND CREW

**OR OREN** (Music Arrangements) was born in Netanya, Israel and started his music education when he was 9 years old starting with learning how to play the trombone in a school program. During his studies in the conservatory, he performed with Netanya Youth Wind Orchestra and the Brass Quintet as a player and soloist around the country and abroad. He wrote his first compositions at age 15. During his studies, he received awards and scholarships both from the Conservatory and Netanya City Hall. In 2013, he was accepted to the Jazz Institute program Rimon School of Music in Ramat HaSharon. In 2014, he began working as a trombone teacher and a year later became a School Program Supervisor and Youth Orchestra Conductor. After his graduation, he attended Berklee College of Music (Boston, MA). In 2015, he was asked by the IMPJ (Israeli Movement for Progressive) to write a piece based on the music of Debbie Friedman, an American singer-songwriter of Jewish religious songs and melodies. A year later, the "Debbie Friedman Suite" was recorded and performed at the IMPJ Biennial Convention in Israel, and later in Boston at the WURJ Humanitarian Awards Dinner. Three more performances will take place in Brazil and Holland. In September 2016, he moved to Boston and began his undergraduate program at Berklee in Film Scoring and conducting. At Berklee he worked as the Film Scoring Department Assistant and received the Doug Timm Award to recognize him as an extraordinary senior student. After graduating in 2018, he moved to Los Angeles where he now lives and works in the music industry.

**SHOSHANNA REIF** (Naomi) is thrilled to be part of Miriam! This will be her second show with MCTP with her first being Music Man. She would like to thank her family for being supportive and driving her to practices. She would also like to express her gratitude to the cast and crew for their encouragement and hard work.

**KERRY SCHNEIDER** (Yocheved) enjoys character roles! At the Palace Theater: Hannah (*Flashdance*), Fraulein Schneider (*Cabaret*), Jeannette (*The Full Monty*), Mama Rose (*Gypsy*), Grandma (*Billy Elliot*) and Sr. Mary Lazaras (*Sister Act*). Regionally: Interlakes Theatre: Mrs. Strakosh (*Funny Girl*); Ogunquit Playhouse, ME – *Music Man*, *Guys and Dolls*, *Fiddler*, *High School Musical*; Kerry also has over 25 years of zany comedic dinner theater experience with Stage One productions in Manchester, NH, over 30 years with The Actorsingers of Nashua, and was Golde in MCTP's first musical, *Fiddler*. Hugs to grandchildren Hannah, Naomi, Cora and McCoy and kisses to my biggest fan- hubby Dennis - the "light of my life".

**JUSTIN SHEILS** (Benjamin) is excited to be back on stage after a long government mandated hiatus. Before *Miriam*, and the recent mini apocalypse, Justin was also in some of MCTP's other great shows, such as *Our Town*, *Alice in Wonderland: The Musical*, and *Legally Blonde: The Musical*. He even had the golden opportunity of Directing MCTP's *The Music Man*, which he helped produce in 2019 just before everything went to hell. Justin hopes that you enjoy *Miriam* just as much as he hates Covid.

---

## WHO'S WHO IN THE CAST AND CREW

**STEVE SHORT** (Sound Design/Company Manager) has been pleased to work with Tom and Alan on this project, having proofread/edited iterations of this script over the years. It has been a remarkable year, but we are so happy to finally put this production up on the stage and screen. Congrats to a wonderful cast and crew for making this original work come to fruition.

**ALLISON SJOLUND** (Dina) is excited to be part of *Miriam*. She has performed with MCTP twice in the past, as Marian the Librarian in *The Music Man* and Mother in *Amahl and the Night Visitors*. Some of her favorite roles outside of MCTP productions were as Belinda in *Noises Off*, Mrs. White in *Clue*, the Mute in *The Fantasticks*, and Clementine in *Rio Hondo*. She is grateful that the New Hampshire community provides her with the opportunity to assume such varied personalities, and thanks her husband John for his support.

**BRUCE SMITH** is in his second production with MCC, having performed in *Amahl And The Night Visitors* in 2017-19. He has performed in various community theater productions throughout New England over the last 20 years, and has also been lead vocalist for a host of regional bands and orchestras. He is a retired Air Force bandsman, lead vocalist for their jazz/pop group, "Looking Glass". He's grateful to be a part of this event, and hopes that everyone can enjoy the production in health, safety and great spirits. "Be kind to one another."

**TRYSTAN STOFFEL** (Stage Manager) Trystan is very glad to be getting back in the saddle of live theater with such a talented cast! She is currently working on MCTP's production of *Annie, Jr.*, and in the fall will be co-directing *Spongebob the Musical*. Outside the theater she is a Special Educator for the Manchester School District, where she is fortunate enough to work with the most amazing kids in the world. Thanks to MCTP for constantly giving her the opportunity to delve further into technical theater, as well as her family, cat, and Erik for literally everything else.

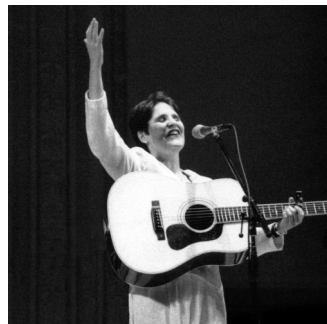
**LISA K. VOLONTE** (Ariella) loves performing and being an active member of MCTP. Off stage, Lisa is the Manager of Client Engineering at RiverStone Resources and a very proud mom. She thanks Gregg, Brian and Larissa as well as her family, friends and co-workers for their continued support!

**MARGARET WINDLER** (Choreographer) has been with MCTP for 16 years. Her favorite show she has done here is *The Music Man*, twice. She graduated with a Bachelor of Arts in Theatre with a concentration in Performance and Digital Media from Marymount Manhattan College in NYC. She has danced for 21 years, and enjoys dancing on a flying rig right here on this stage. She is so excited and honored to have been a part of this very special show.

**GLENN WAKELEY** (Obed/Guard) is here for his second MCTP show, having starred as Lou Costello in *Hey Abbott!* He has performed all around MA and NH, usually in comedies. Previous favorite roles include *Funny Money*, *Moon over Buffalo*, *Taking Steps*, *A Nice Family Gathering*, *Laughter on the 23rd Floor*, *Oscar & Felix* and *Noises Off!* He was also writer/co-director of the original comedy *The Wake of One Ira Chang*. Thanks to Alan and the cast and crew of *Miriam* for a return to the musical arena.

---

# GLOSSARY OF HEBREW TERMS



*HINENI.* Here I am.

*MALAKH* Messenger

*EEMA* Mother (*ABAH* Father)

*ADONAI* G-d

*ADONAI ECHAD* G-d is one

*L'CHI LACH* (Song) Go for yourself.

*L'-SIM CHAT CHA-YIM* (Song) You shall be a blessing

*NER TAMID* Eternal light

*YITGADAL V'YITKA DASH SH'MEI RA BA B'ALMA DIV'RA CHIRUTEI, V'YAM LICH V'YAM-LICH MALCHUTEI* Hebrew/Aramaic prayer for the dead... Glorified and sanctified be G-d's great name throughout the world which He has created according to His will. May He establish His kingdom in your lifetime and during your days

*BOKER TOV* Good morning (Response is *BOKER OR*, or morning light)

*MI SHE-BEIRACH* (Song) A prayer for healing "May the one who blessed our ancestors, Abraham, Isaac and Jacob, Sarah, Rebecca, Rachel and Leah, bless and heal those who are ill. May the Blessed Holy One be filled with compassion for their health to be restored and their strength to be revived. May G-d swiftly send them a complete renewal of body and spirit, and let us say, Amen."

*DAHM* (in the Plague Song) Blood

*MANNA* Substance miraculously supplied as food to the Israelites in the wilderness (Exodus 16)

*SHECHINAH* (in Lullaby Song) The dwelling or settling of the divine presence of God

*ELOHAI, N'SHA MAH* (Song) Oh G-d, this soul you've given me...

*CHAG HASHAVUOT* (in "613 Commandments" song) "The holiday of Shavuot", or Feast of Weeks (also, The Pentecost), celebrating the day G-d gave the Ten Commandments to the Israelites.

*ELI NA R'FA NA LA* "Please, G-d, please heal her."

*IM TIRZU...* (Song) "If you will it, it is no dream to be a free people in our land of Zion and Jerusalem"

**CHERYL FRIEDMAN** is Debbie's older sister, and instrumental in bringing her music to this production. She currently resides in Southern California. Though the years separated Cheryl and Debbie geographically, they remained very close. Each chose different avenues to express herself professionally. But, in their chosen professions, they both expressed the values and morality of Judaism as they were inspired by their mother and maternal grandparents. Cheryl is a graduate of the University of Minnesota, Drake Law School, and Newport Psychoanalytic Institute. Her professional journey took her from a rehabilitation counselor for brain damaged and individuals with genetic disorders to restaurant management. In 1980, after graduating from law school, Cheryl was a securities regulator for the State of Iowa. Then, she took her dream job as the Homeless and Mental Health attorney for Legal Services.

In 1988, she relocated in California, where Debbie resided. After Debbie moved to New York, Cheryl moved to Orange County, California and volunteered at a Jewish Day school. For 10 years, she was a commercial photographer. She, then, decided to enter Newport Psychoanalytic Institute to study towards a license as Doctor of Psychology in Psychoanalysis. After graduating, Cheryl had a private practice.

Shortly after Debbie's death, while in her private practice, Cheryl began studying the Jewish and psychoanalytic approaches to dealing with death and dying, mourning and grieving. In 2013, the paper resulting from her study was published in a book that addresses the interface and the mutual influence of Jewish thought and modern psychoanalysis. In 2010, Debbie moved to Orange County to live closer to her mom and aunt as they grew older. Debbie died 8 months later. In 2014, Cheryl retired to be a full-time presence in the last years of her mother's, Freda and Aunt Ann's lives. Cheryl resides in Orange County.

## **Dr. Kevin O'Brien, Chiropractor**

120 Pleasant Valley St. Methuen, MA 01844

978-975-8510 [www.doctorkevinobrien.com](http://www.doctorkevinobrien.com)

Providing expert, drug-free treatment for:

Neck and Back Pain, Headache/Migraine, Sciatica/Leg Pain,

Degenerative Disc Disease/Spinal Arthritis

\*\*\*Board Certified Diplomate of the American College of  
Chiropractic Orthopedists and

the American Chiropractic Board of Neurology



**Integrity. Commitment. Flexibility. Kindness.**

**Our Values.  
Your Future.**



Work with Steve Dalton, CERTIFIED FINANCIAL PLANNER™ professional, to plan for your financial future.

**Steve Dalton, CFP®**

15 Constitution Drive, Suite 1A  
Bedford, New Hampshire 03110  
603-288-0230  
steve@dalton-cambridge.com  
dalton-cambridge.com



**Call 603-288-0230 to start your  
planning today!**

Securities offered through Registered Representatives of Cambridge Investment Research, Inc., a broker-dealer, Member FINRA/SIPC. Advisory services through Cambridge Investment Research Advisors, Inc., a Registered Investment Advisor. V.CIR.1219-5068

**Kingsley Bookkeeping Services**

All your bookkeeping and tax preparation needs

**Shawn Gore**

Owner/ Bookkeeper  
Tax Preparer

603-965-5881

rnrgore@comcast.net



*Siamese Speak*



Purebred siamese kittens

Lisa Gore

603-303-1726

Legore@comcast.net

Facebook.com/siamesespeak

*Located in Southern New Hampshire*

# *J. N. Boufford & Sons*

**Funeral Home & Cremation Service**



*Four generations  
of our family serving  
generations of your family.*

**Edmond "Bou" Boufford Baker, Pres.**

**[www.bouffordfuneralhome.com](http://www.bouffordfuneralhome.com)**

**(603) 625-6436 • 110 Bridge Street, Manchester NH 03101**



## **SAM DIEDRICH**

**Singer • Pianist •  
Composer • Lyricist**

**(978) 877-9789**

**[sqdiedrich@gmail.com](mailto:sqdiedrich@gmail.com)**

**[facebook.com/PlayItAgainSam84](https://facebook.com/PlayItAgainSam84)**

**[samdiedrich1.bandcamp.com](http://samdiedrich1.bandcamp.com)**

**Blue Dolphin**  
**Pools & Spas Inc.**

The Backyard Living Specialists  
Over 32 Years of Installing Custom Pools

**Jean Beaulieu**  
7 Bellemore Drive  
Bedford, NH 03110  
[jean@bdolphin.com](mailto:jean@bdolphin.com)

**APSP**  
The Association of  
Pool & Spa Professionals®

**[www.bdolphin.com](http://www.bdolphin.com) | 603.627.2527**

**CONGRATULATIONS TO ALL THAT MAKE THEATRE**

**SUCH A GREAT EXPERIENCE!**

**FROM YOUR FRIENDS AT BLUE DOLPHIN POOLS & SPAS, INC.**

## THE MIRIAM ORCHESTRA

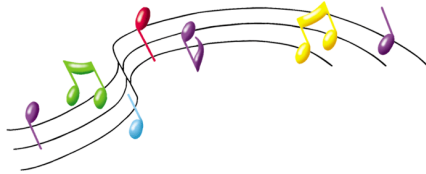
KEYBOARD/DIRECTOR: JUDY HAYWARD

SCOTT THIBODEAU: REEDS

LUCAS GAGNE: GUITAR

RAY CRAIGIE; BASS

STEPHEN BIEDRZYCKI; PERCUSSION



### The Cast and Crew of *MIRIAM*

gratefully acknowledge and thank the following individuals and companies for their support of this performance

- **Larry Eckman** and **Reeds Ferry Lumber** for their very generous donation of lumber, paint, hardware and supplies for all the sets
- **Rabbi Robin Nafshi** for the use of her beautiful *Midrash*
- **Rabbi Beth Davidson** for her hours of script review
- **Tom Anastasi**, Publicity
- **Steve Short**, Playbill
- **Jim Cotton**, Video Production
- **Lisa Volonte & Margaret Windler**, Featured Dancers
- **Leah Kuehne**, Scenic Painting
- **True Marketing Communications, Dover NH** for Poster Design
- **All the gang at Pyramid Builders, Ltd.** for set construction and demolition
- **Special thanks to the cast and crew** for helping out in all aspects of this production from set build and painting to gathering props.

**Thank You to Our Wonderful Volunteer Ticket Takers,  
Ushers and Concession Workers**



# NORTH END Montessori School

698 Beech Street Manchester NH 03104  
603-621-9011

---

Specializing in **AFFORDABLE**  
ELEMENTARY, KINDERGARTEN,  
PRESCHOOL, TODDLER  
Monday – Friday 7:00am – 6:00pm

---

Full time programming \$200/week  
**CALL US to set up a tour TODAY!**  
**CONTACT SCHOOL FOR ENROLLMENT INCENTIVES**

Steve Dalton CFP  
15 Constitution Drive Suite 1A  
Bedford, NH 03110  
603 288 0230

[steve@dalton-cambridge.com](mailto:steve@dalton-cambridge.com)

Securities offered through Registered Representatives of  
Cambridge Investment Research, Inc. a broker-dealer, member  
FINRA/SIPC. Advisory services offered through Cambridge  
Investment Research Advisors Inc. a Regional Investment Advisor.





# Manchester Community Theatre Players and Second Stage Professional

Salute

Susan and John Monson and  
The Brown Monson Foundation

For their Sustained Generosity  
and Commitment to  
Improving Technical Excellence



**MAPLE TREE MALL**  
545 HOOKSETT RD #23  
MANCHESTER, NH 03104

**603-622-9491**  
**TMOPTICAL.COM**

**OFFICE HOURS**

MON • WED • FRI  
10:00 AM - 6:00 PM

TUES • THURS  
10:00 AM - 7:00 PM

SATURDAYS  
10:00 AM - 2:00 PM



SPECIAL THANKS FOR PHOTO RIGHTS

Michael Fox Photography - Moraga California

AND

Zion Ozeri – New York City



amazonPrime

**SUPPORT MCTP WHILE YOU SHOP!**

Purchase on-line at Amazon and support Manchester Community Theatre Players.  
It's as simple as 1-2-3!

1. Instead of going to Amazon.com, go to [Smile Amazon.Com](https://www.smile.amazon.com) to place your orders. (If you already have an account with Amazon.com, all of your account information stays the same)
2. Choose "Manchester Community Theatre Players" from the list of non-profits.
3. Shop as usual and 0.5% of the purchase price will be donated to MCTP!

**CASINGHINO LAW OFFICE, PLLC**

84 Bay Street, Manchester, NH 03104

503-669-6111

Providing effective, high-quality legal representation



Cronin  
Bisson &  
Zalinsky P.C.  
Attorneys at Law

**Christine M. Windler**  
*Wills, Trusts, & Estates*

722 Chestnut Street • Manchester, NH 03104

tel: (603) 624-4333 • fax: (603) 623-5626

[cwindler@cbzlaw.com](mailto:cwindler@cbzlaw.com)

**PENCHANSKY & CO. PLLC**  
 CERTIFIED PUBLIC ACCOUNTANTS

*proudly supports:*  
*Manchester Community Theatre Players*



**Accounting/Tax Prep/Auditing Services/Business Consulting**  
 SERVING THE GREATER MANCHESTER AREA

**WWW.PENCHANSKY.COM**

PHONE: (603) 647-2400      FAX: (603) 647-6495

**MANCHESTER COMMUNITY THEATRE PLAYERS  
 GRATEFULLY ACKNOWLEDGE THE FOLLOWING  
 GENEROUS DONORS AND THEIR GIFTS**

**Brown-Monson Fund**

Digital Sound Board , Wireless Communication System,  
 Additional LED Lighting, and New Digital Lighting Board

**Greenspan Foundation**

Parnell Stage Lighting 12 units

**Riverstone Corporation**

LED Lighting

**Hunt Foundation**

Lighting Truss, Cabling, Curtain Track,  
 Digital lighting Board, CD Deck drive, ETC Lights

**Getz Charitable Trust, Citizens Bank, NA, Trustee**  
 for their generous gift to provide lighting for our shows

**St. Mary's Bank**

for their generous gift enabling us to rebuild our stage



**DEBBIE FRIEDMAN  
SCHOOL OF  
SACRED MUSIC**

May 10, 2021 – 28 Iyar 5781

Congratulations to all involved in the world premiere of *Miriam: First Woman Prophet* – what an important undertaking!

At the Debbie Friedman School of Sacred Music, we prepare future cantors to fulfill their roles as ordained clergy, leaders of prayer, builders of sacred community, pastoral mentors, and transmitters of Jewish wisdom and culture.

During their development at HUC-JIR, cantorial students learn to integrate repertoires from the most traditional to the most contemporary, bearing in mind the importance of empowering the communal voice in song.

As an adjunct faculty member of the DFSSM, Debbie Friedman inspired students to find their own voices, and to lead and transmit Jewish soulfulness through music. We will always be indebted to her for those precious years at the College-Institute.

May the light of Debbie's spirit be renewed in this new musical, and may her music continue to influence generations old and new.

With every good wish,

Cantor Richard Cohn, Director  
Debbie Friedman School of Sacred Music



SPECIAL THANKS TO



**UNION *for*  
REFORM JUDAISM**

**COMING NEXT FROM**



MANCHESTER  
COMMUNITY THEATRE  
PLAYERS



October 15, 16, 22, 23...see [www.mctp.info](http://www.mctp.info)

---

## 2020-2021 Season Sponsors

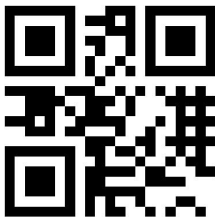
The 2020-2021 season would not be possible without the support of our corporate and individual sponsors and donors. We are very grateful for their support, and encourage you to patronize these businesses and thank them for supporting the arts.

### Foundations

The Samuel P. Hunt Foundation  
Brown Monson Foundation  
Ethel Greenspan Trust  
The Sidore Foundation  
The Gruber Foundation  
Caldwell Charitable Trust  
Getz Charitable Trust  
St. Mary's Bank

### Corporations

BASC  
RiverStone Resources  
Penchansky & Company  
Auto City of Manchester, Inc.  
Cronin, Bisson, & Zelinsky P.C.  
Taylor & Murphy  
Sir Speedy of New Hampshire  
Steven M. Dalton, CFP  
Dr. Kevin O'Brien  
Manchester Rotary Club  
Eversource



### Individual Members

#### **Conductor**

Jeffrey Kraines & Linda Kaplan

#### **Lead**

Alan D. and Emilie Kaplan  
Lisa Volonte

#### **Actor/Actress**

Sandra Rodgers Trust

#### **Chorus**

Craig Brennan  
Steve and Fran Short  
William and Christine Windler  
Mark Schwartzberg/Sasha Kuftinek  
Lucia A. Merritt, CPA

#### **Family**

Tom Anastasi  
Michael and Kelly Bender  
Ken & Lori Coyle  
Deb Garlin  
Linda Emberly  
Stephen Singer

#### **Friend**

Dave Lemay  
Bruce MacDonald  
Dan Merriman  
Jackie O'Dowd  
Lindner Dental Associates, P.C.